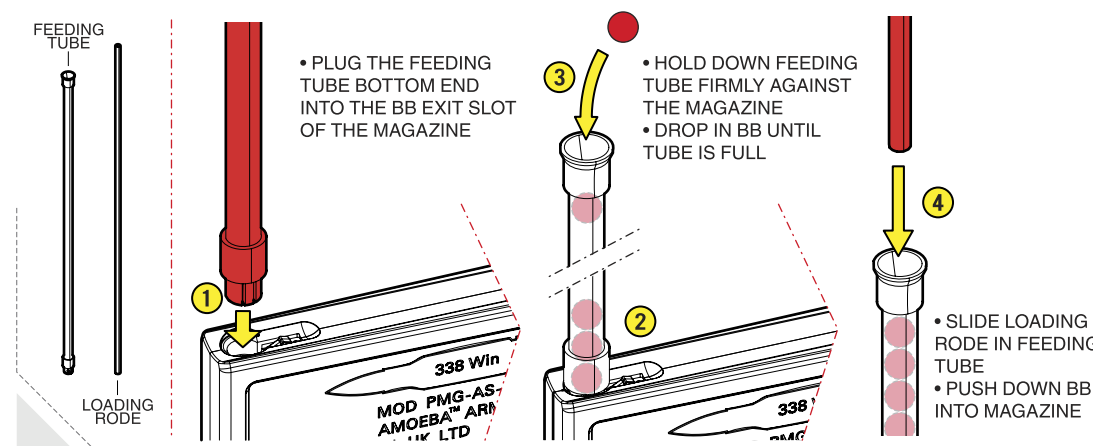
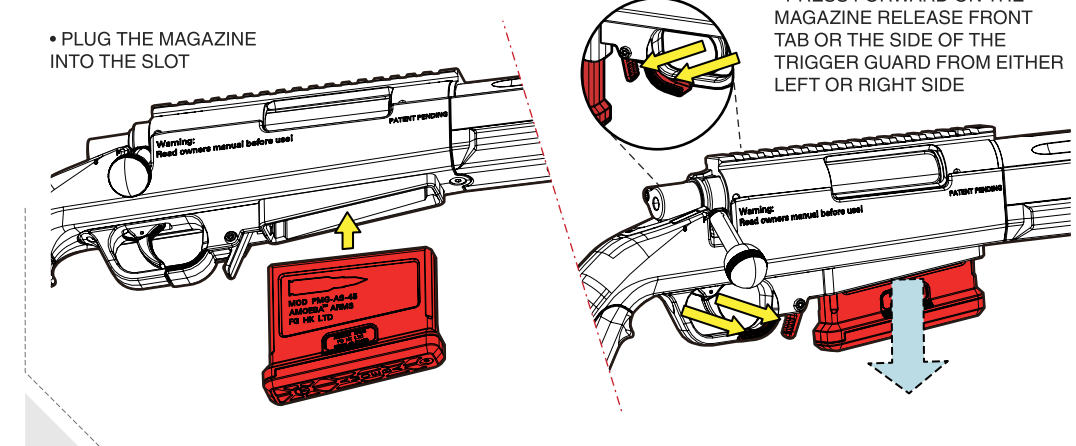




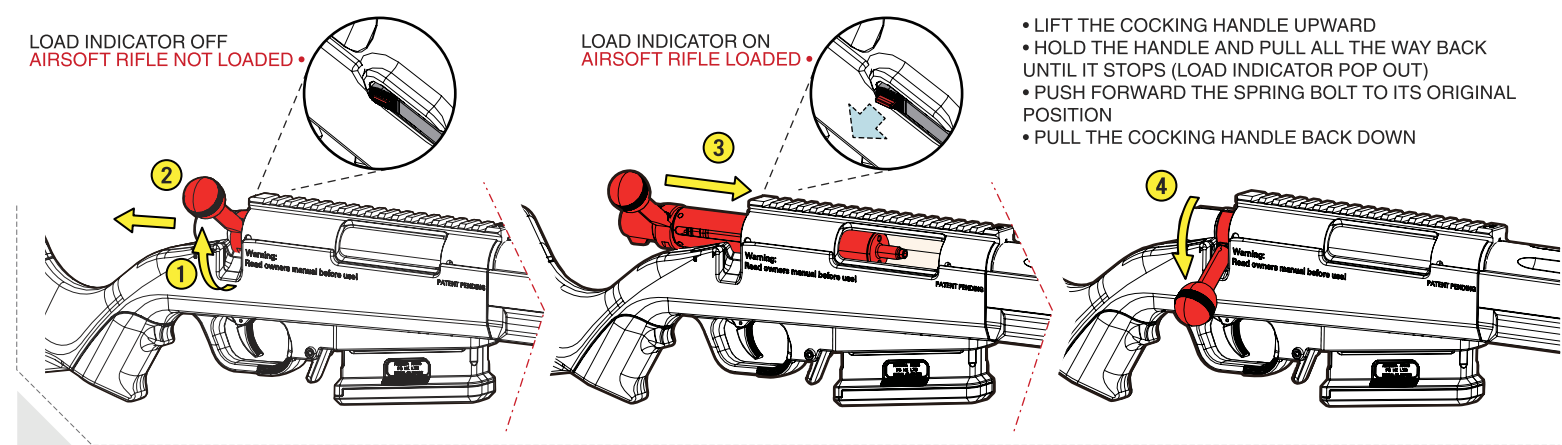
## LOADING MAGAZINE



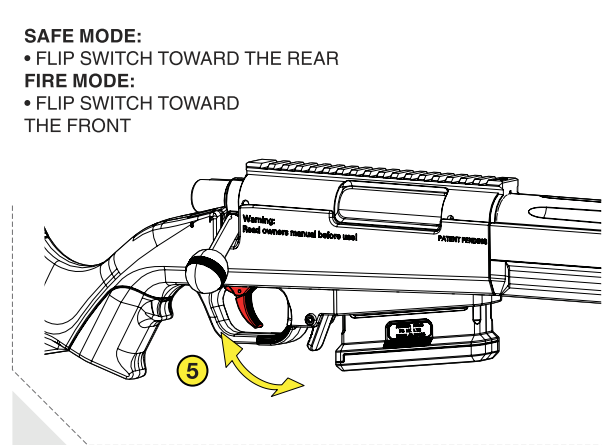
## INSTALL/RELEASE MAGAZINE



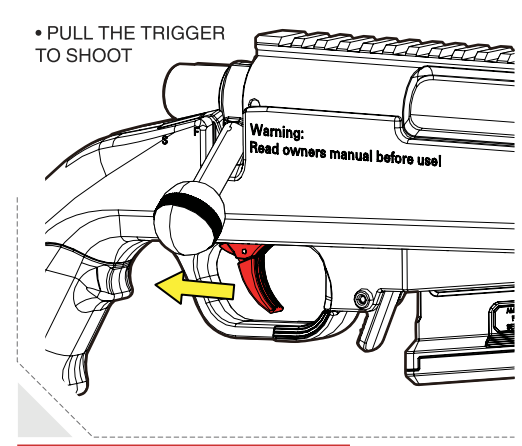
## LOADING OPERATION & LOAD INDICATOR



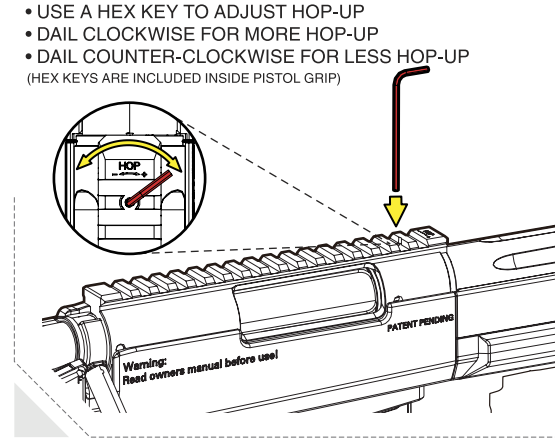
## SWITCH FIRE MODE



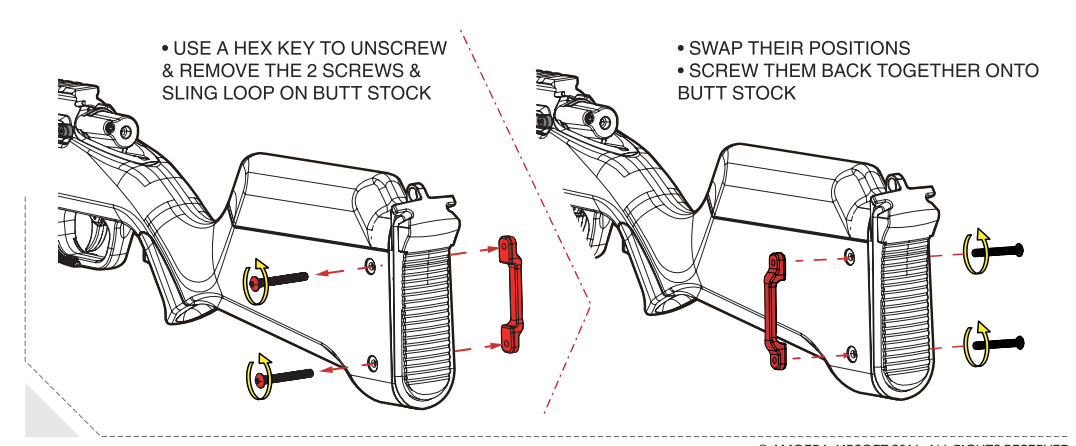
## TO SHOOT



## HOP-UP ADJUSTMENT

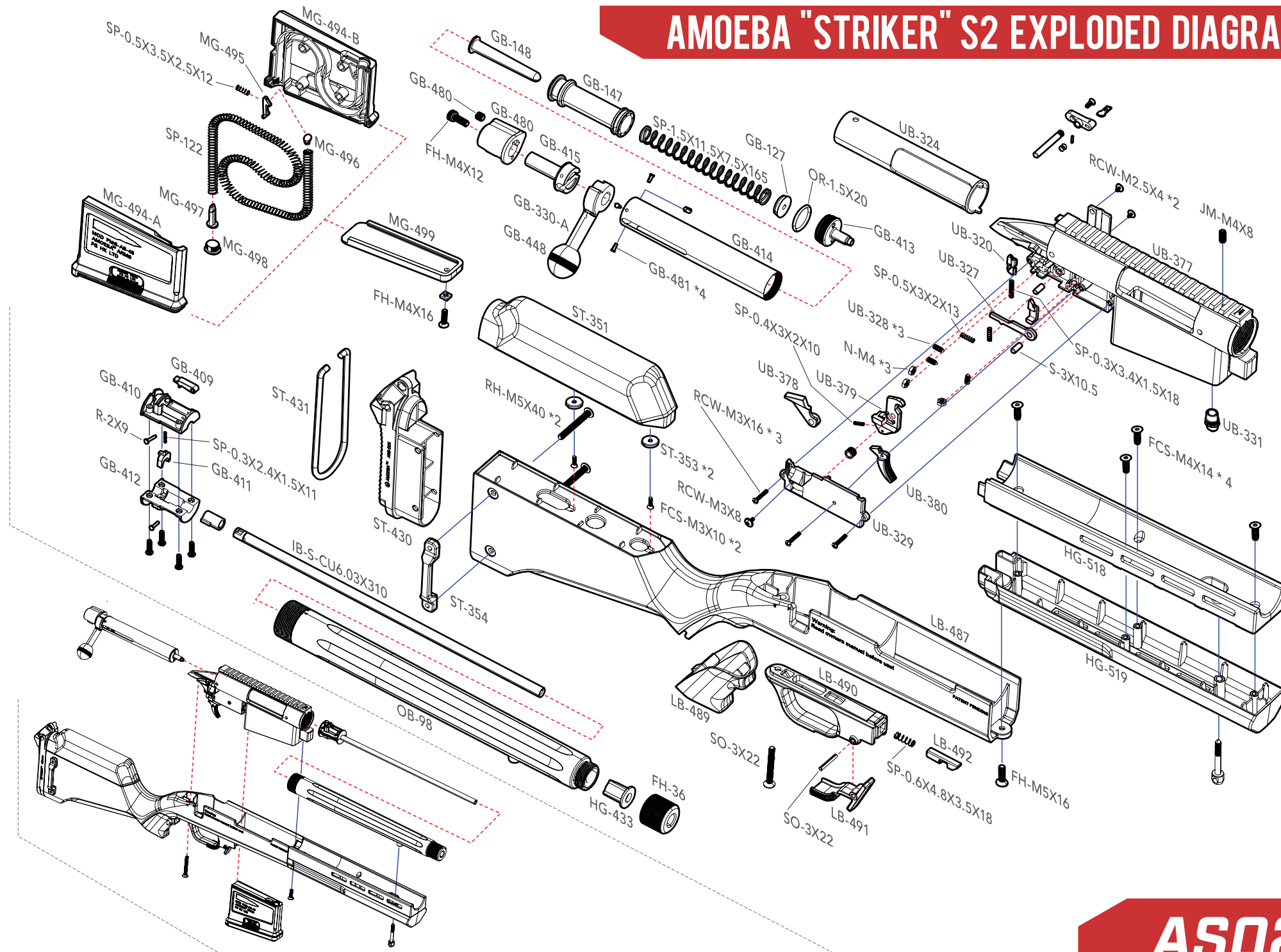


## REVERSE SLING LOOP POSITION





## AMOEBa "STRIKER" S2 EXPLODED DIAGRAM



855mm  
2250g  
45rounds  
SAFE / FIRE  
Nylon Fiber + CNC 6063  
ADJUSTABLE  
±430 FPS / <2 JOULES



**WARNING**

